

SECTION 39

24' DRIVE

SECTION 41
22' DRIVE

SEE WEST CENTRAL PART

NOTE:
THE LOT NUMBER IS PLACED IN THE UPPER
RIGHT HAND CORNER OF LOTS AS YOU FACE
THE LOT AND IS INDICATED THUS

LOCATION OF GRAVE MARKER IS SHOWN
THUS . ARROW INDICATES
DIRECTION MARKERS WILL FACE.

ALL LOTS ARE 2 GRAVE LOTS EXCEPT
WHERE OTHERWISE NOTED.

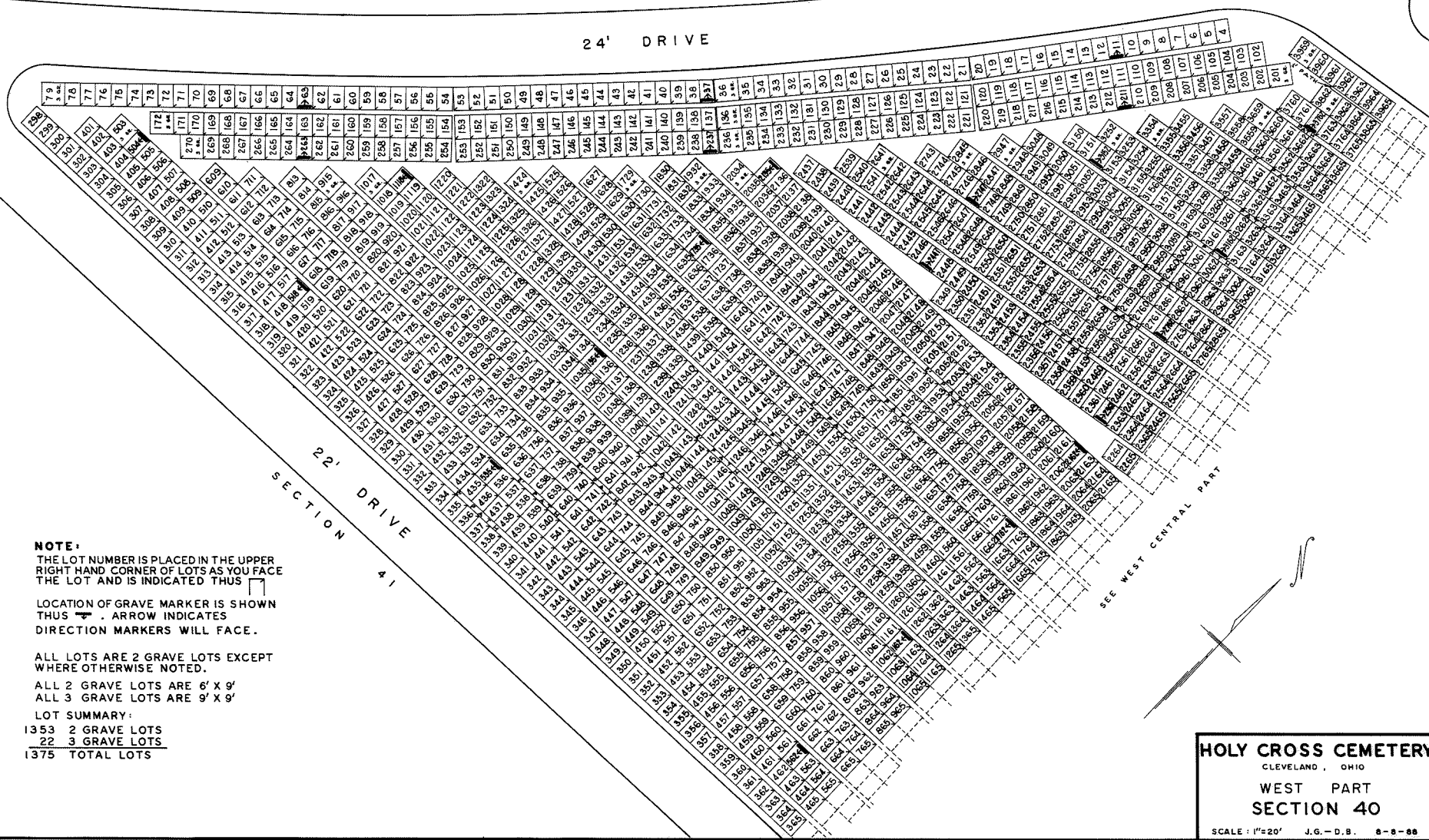
ALL 2 GRAVE LOTS ARE 6' X 9'
ALL 3 GRAVE LOTS ARE 9' X 9'

LOT SUMMARY:
1353 2 GRAVE LOTS
22 3 GRAVE LOTS
1375 TOTAL LOTS

HOLY CROSS CEMETERY
CLEVELAND, OHIO
WEST PART
SECTION 40

SCALE: 1"=20' J.G.-D.B. 8-8-88

PLS. DULLEY 8-18-88



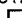

SEE EAST CENTRAL PART

SECTION 30

22' DRIVE

3999	3893	3793	3693	3593	3493	3393	3293	3193	3093	2993	2893	2793	2693	2593	2493	2393	2293	2193	2093	1993	1893	1793	1693	1593	1493	1393	1293	1193	1093	993	893	793	693	593	493	393
3998	3892	3792	3692	3592	3492	3392	3292	3192	3092	2992	2892	2792	2692	2592	2492	2392	2292	2192	2092	1992	1892	1792	1692	1592	1492	1392	1292	1192	1092	992	892	792	692	592	492	392
3997	3891	3791	3691	3591	3491	3391	3291	3191	3091	2991	2891	2791	2691	2591	2491	2391	2291	2191	2091	1991	1891	1791	1691	1591	1491	1391	1291	1191	1091	991	891	791	691	591	491	391
3996	3890	3790	3690	3590	3490	3390	3290	3190	3090	2990	2890	2790	2690	2590	2490	2390	2290	2190	2090	1990	1890	1790	1690	1590	1490	1390	1290	1190	1090	990	890	790	690	590	490	390
3995	3889	3789	3689	3589	3489	3389	3289	3189	3089	2989	2889	2789	2689	2589	2489	2389	2289	2189	2089	1989	1889	1789	1689	1589	1489	1389	1289	1189	1089	989	889	789	689	589	489	389
3994	3888	3788	3688	3588	3488	3388	3288	3188	3088	2988	2888	2788	2688	2588	2488	2388	2288	2188	2088	1988	1888	1788	1688	1588	1488	1388	1288	1188	1088	988	888	788	688	588	488	388
3993	3887	3787	3687	3587	3487	3387	3287	3187	3087	2987	2887	2787	2687	2587	2487	2387	2287	2187	2087	1987	1887	1787	1687	1587	1487	1387	1287	1187	1087	987	887	787	687	587	487	387
3992	3886	3786	3686	3586	3486	3386	3286	3186	3086	2986	2886	2786	2686	2586	2486	2386	2286	2186	2086	1986	1886	1786	1686	1586	1486	1386	1286	1186	1086	986	886	786	686	586	486	386
3991	3885	3785	3685	3585	3485	3385	3285	3185	3085	2985	2885	2785	2685	2585	2485	2385	2285	2185	2085	1985	1885	1785	1685	1585	1485	1385	1285	1185	1085	985	885	785	685	585	485	385
3990	3884	3784	3684	3584	3484	3384	3284	3184	3084	2984	2884	2784	2684	2584	2484	2384	2284	2184	2084	1984	1884	1784	1684	1584	1484	1384	1284	1184	1084	984	884	784	684	584	484	384
3989	3883	3783	3683	3583	3483	3383	3283	3183	3083	2983	2883	2783	2683	2583	2483	2383	2283	2183	2083	1983	1883	1783	1683	1583	1483	1383	1283	1183	1083	983	883	783	683	583	483	383
3988	3882	3782	3682	3582	3482	3382	3282	3182	3082	2982	2882	2782	2682	2582	2482	2382	2282	2182	2082	1982	1882	1782	1682	1582	1482	1382	1282	1182	1082	982	882	782	682	582	482	382
3987	3881	3781	3681	3581	3481	3381	3281	3181	3081	2981	2881	2781	2681	2581	2481	2381	2281	2181	2081	1981	1881	1781	1681	1581	1481	1381	1281	1181	1081	981	881	781	681	581	481	381
3986	3880	3780	3680	3580	3480	3380	3280	3180	3080	2980	2880	2780	2680	2580	2480	2380	2280	2180	2080	1980	1880	1780	1680	1580	1480	1380	1280	1180	1080	980	880	780	680	580	480	380
3985	3879	3779	3679	3579	3479	3379	3279	3179	3079	2979	2879	2779	2679	2579	2479	2379	2279	2179	2079	1979	1879	1779	1679	1579	1479	1379	1279	1179	1079	979	879	779	679	579	479	379
3984	3878	3778	3678	3578	3478	3378	3278	3178	3078	2978	2878	2778	2678	2578	2478	2378	2278	2178	2078	1978	1878	1778	1678	1578	1478	1378	1278	1178	1078	978	878	778	678	578	478	378
3983	3877	3777	3677	3577	3477	3377	3277	3177	3077	2977	2877	2777	2677	2577	2477	2377	2277	2177	2077	1977	1877	1777	1677	1577	1477	1377	1277	1177	1077	977	877	777	677	577	477	377
3982	3876	3776	3676	3576	3476	3376	3276	3176	3076	2976	2876	2776	2676	2576	2476	2376	2276	2176	2076	1976	1876	1776	1676	1576	1476	1376	1276	1176	1076	976	876	776	676	576	476	376
3981	3875	3775	3675	3575	3475	3375	3275	3175	3075	2975	2875	2775	2675	2575	2475	2375	2275	2175	2075	1975	1875	1775	1675	1575	1475	1375	1275	1175	1075	975	875	775	675	575	475	375
3980	3874	3774	3674	3574	3474	3374	3274	3174	3074	2974	2874	2774	2674	2574	2474	2374	2274	2174	2074	1974	1874	1774	1674	1574	1474	1374	1274	1174	1074	974	874	774	674	574	474	374
3979	3873	3773	3673	3573	3473	3373	3273	3173	3073	2973	2873	2773	2673	2573	2473	2373	2273	2173	2073	1973	1873	1773	1673	1573	1473	1373	1273	1173	1073	973	873	773	673	573	473	373
3978	3872	3772	3672	3572	3472	3372	3272	3172	3072	2972	2872	2772	2672	2572	2472	2372	2272	2172	2072	1972	1872	1772	1672	1572	1472	1372	1272	1172	1072	972	872	772	672	572	472	372
3977	3871	3771	3671	3571	3471	3371	3271	3171	3071	2971	2871	2771	2671	2571	2471	2371	2271	2171	2071	1971	1871	1771	1671	1571	1471	1371	1271	1171	1071	971	871	771	671	571	471	371
3976	3870	3770	3670	3570	3470	3370	3270	3170	3070	2970	2870	2770	2670	2570	2470	2370	2270	2170	2070	1970	1870	1770	1670	1570	1470	1370	1270	1170	1070	970	870	770	670	570	470	370
3975	3869	3769	3669	3569	3469	3369	3269	3169	3069	2969	2869	2769	2669	2569	2469	2369	2269	2169	2069	1969	1869	1769	1669	1569	1469	1369	1269	1169	1069	969	869	769	669	569	469	369
3974	3868	3768	3668	3568	3468	3368	3268	3168	3068	2968	2868	2768	2668	2568	2468	2368	2268	2168	2068	1968	1868	1768	1668	1568	1468	1368	1268	1168	1068	968	868	768	668	568	468	368
3973	3867	3767	3667	3567	3467	3367	3267	3167	3067	2967	2867	2767	2667	2567	2467	2367	2267	2167	2067	1967	1867	1767	1667	1567	1467	1367	1267	1167	1067	967	867	767	667	567	467	367
3972	3866	3766	3666	3566	3466	3366	3266	3166	3066	2966	2866	2766	2666	2566	2466	2366	2266	2166	2066	1966	1866	1766	1666	1566	1466	1366	1266	1166	1066	966	866	766	666	566	466	366
3971	3865	3765	3665	3565	3465	3365	3265	3165	3065	2965	2865	2765	2665	2565	2465	2365	2265	2165	2065	1965	1865	1765	1665	1565	1465	1365	1265	1165	1065	965	865	765	665	565	465	365
3970	3864	3764	3664	3564	3464	3364	3264	3164	3064	2964	2864	2764	2664	2564	2464	2364	2264	2164	2064	1964	1864	1764	1664	1564	1464	1364	1264	1164	1064	964	864	764	664	564	464	364
3969	3863	3763	3663	3563	3463	3363	3263	3163	3063	2963	2863	2763	2663	2563	2463	2363	2263	2163	2063	1963	1863	1763	1663	1563	1463	1363	1263	1163	1063	963	863	763	663	563	463	363
3968	3862	3762	3662	3562	3462	3362	3262	3162	3062	2962	2862	2762	2662	2562	2462	2362	2262	2162	2062	1962	1862	1762	1662	1562	1462	1362	1262	1162	1062	962	862	762	662	562	462	362
3967	3861	3761	3661	3561	3461	3361	3261	3161	3061	2961	2861	2761	2661	2561	2461	2361	2261	2161	2061	1961	1861	1761	1661	1561	1461	1361	1261	1161	1061	961	861	761	661	561	461	361
3966	3860	3760	3660	3560	3460	3360	3260	3160	3060	2960	2860	2760	2660	2560	2460	2360	2260	2160	2060	1960	1860	1760	1660	1560	1460	1360	1260	1160	1060	960	860	760	660	560	460	360

SEE WEST PART

NOTE:
 THE LOT NUMBER IS PLACED IN THE UPPER
 RIGHT HAND CORNER OF LOTS AS YOU FACE
 THE LOT AND IS INDICATED THUS 
 LOCATION OF GRAVE MARKER IS SHOWN
 THUS  . ARROW INDICATES
 DIRECTION MARKERS WILL FACE.

ALL LOTS ARE 2 GRAVE LOTS EXCEPT
 WHERE OTHERWISE NOTED.
 ALL 2 GRAVE LOTS ARE 6' X 9'
 ALL 3 GRAVE LOTS ARE 9' X 9'
 LOT SUMMARY:
 1155 2 GRAVE LOTS
 84 3 GRAVE LOTS
 1239 TOTAL LOTS

HOLY CROSS CEMETERY
 CLEVELAND, OHIO
 WEST CENTRAL PART
 SECTION 40

SCALE: 1"=20' J.G.-D.B. 3-4-88

AS BUILT 8-10-88

